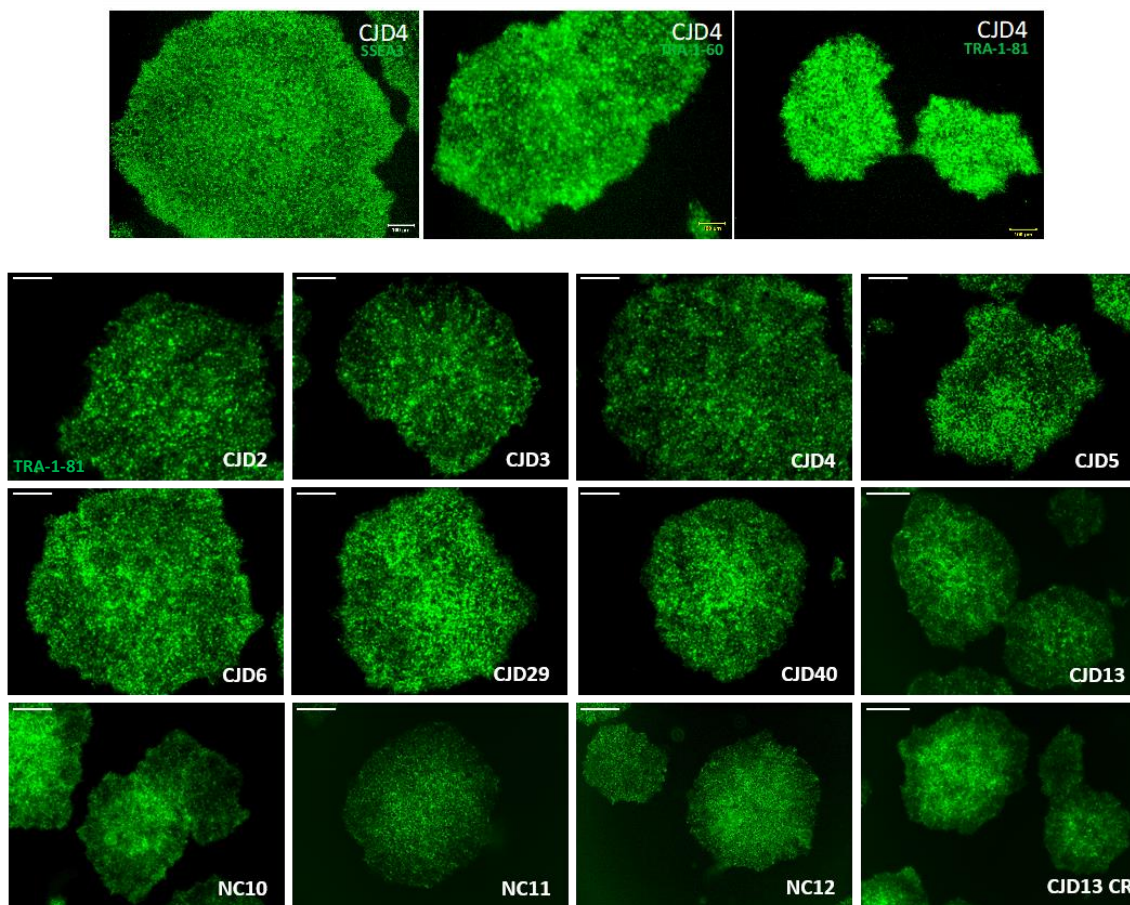


## Creutzfeldt-Jakob Disease (CJD) iPSC Biorepository

Welcome to the CRem's CJD iPSC Biorepository. Through this website, you can access iPSC lines generated by reprogramming PBMCs obtained with informed consent from individuals carriers and non-carriers of the E200K mutation, the most frequent mutation associated with the familial form of CJD (fCJD). In collaboration with the CJD Foundation in Israel, we have generated the largest E200K-specific library containing 22 samples of carriers and non-carriers, several of which have been reprogrammed to iPSC. CJD iPSC are archived as frozen, shareable vials housed in the Center for Regenerative Medicine (CRem) at Boston University and Boston Medical Center. Please access the [searchable catalog](#) of these iPSC lines, where information on how to request lines from our iPSC Core facility is detailed.



We have previously differentiated several lines in this repository into neurons, astrocytes and brain organoids.

We thank the CJD Israel Foundation which constant support and enthusiasm served as the inspiration for the generation of this Biorepository and most importantly, the patient volunteers who generously donated the samples from which these iPSC lines were generated.